



**India Meteorological Department  
(Ministry of Earth Sciences)  
NATIONAL BULLETIN NO. 3 (BoB/03/2025)**

**TIME OF ISSUE: 0200 HOURS IST**

**DATED: 15.07.2025**

**FROM: INDIA METEOROLOGICAL DEPARTMENT**

**(FAX NO. 24643965/24699216/24623220)**

**TO: CONTROL ROOM, NDM, MINISTRY OF HOME AFFAIRS (FAX.NO. 23093750)  
CONTROL ROOM NDMA (FAX.NO. 26701729)  
CABINET SECRETARIAT (FAX.NO.23012284, 23018638)  
PS TO HON'BLE MINISTER FOR S & T AND EARTH SCIENCES (FAX NO.23316745)  
SECRETARY, MOES (FAX NO. 24629777)  
H.Q. (INTEGRATED DEFENCE STAFF AND CDS) (FAX NO. 23005137/23005147)  
DIRECTOR GENERAL, DOORDARSHAN (23385843)  
DIRECTOR GENERAL, AIR (23421105, 23421219)  
PIB MOES (FAX NO. 23389042)  
UNI (FAX NO. 23355841)  
D.G. NATIONAL DISASTER RESPONSE FORCE (NDRF) (FAX NO. 26105912, 2436 3260)  
DIRECTOR, PUNCTUALITY, INDIAN RAILWAYS (FAX NO. 23388503)  
CHIEF SECRETARY, ODISHA (FAX NO. 0674-2536660)  
CHIEF SECRETARY, WEST BENGAL (FAX NO. 033-22144328)  
CHIEF SECRETARY, GOVT. OF SIKKIM (FAX NO.0359-2222851)  
CHIEF SECRETARY, GOVT. OF BIHAR (FAX NO. 0612-2217085)  
CHIEF SECRETARY, GOVT. OF JHARKHAND (FAX NO. 0651-2400255)  
CHIEF SECRETARY, GOVT. OF CHHATTISGARH (FAX NO. 0771-2221206)  
CHIEF SECRETARY, GOVT. OF MADHYA PRADESH (FAX NO. 0755-2551521)  
CHIEF SECRETARY, GOVT. OF RAJASTHAN (FAX NO. 0141-2227114)  
CHIEF SECRETARY, GOVT. OF ASSAM (FAX NO. 0361-2260900)  
CHIEF SECRETARY, GOVT. OF MEGHALAYA (FAX NO. 0364-2225978)**

**Subject: (A) Depression over central parts of Gangetic West Bengal  
(B) Well Marked Low pressure area over central parts of north Rajasthan**

**(A) Depression over central parts of Gangetic West Bengal**

The depression over Southeast Gangetic West Bengal and adjoining Bangladesh moved west-northwestwards with speed of 8 kmph during past 6 hours and lay centred at 2330 hrs IST of today, the 14th July 2025 over central parts of Gangetic West Bengal near Lat. 23.5°N and Long. 88.0°E, about 110 km north-northwest of Kolkata, 30 km north-northeast of Burdwan and 160km east of Dhanbad.

It is likely to move further west–northwestwards across Gangetic West Bengal and Jharkhand during next 24 hours.

**(B) Well Marked Low pressure area over central parts of north Rajasthan**

The well marked Low Pressure area over northeast Rajasthan moved west-northwestwards and lay over central parts of north Rajasthan at 2330 hrs IST of today, the 14th July, 2025.

It is likely to continue to move further slowly west-northwestwards across Rajasthan during next 2 days.

## **Warnings:**

### **(i) Rainfall Warning:**

**Odisha:** Light to moderate rainfall at most places with heavy to very heavy rainfall at isolated places during 15<sup>th</sup> to 16<sup>th</sup> July and heavy rainfall at isolated places on 17<sup>th</sup> July.

**West Bengal & Sikkim:** Light to moderate rainfall at most places with heavy to very heavy rainfall at a few places with extremely heavy rainfall (**≥ 21 cm**) at isolated places over coastal Gangetic West Bengal and heavy rainfall at isolated places Sub-Himalayan West Bengal till morning hours of 15<sup>th</sup> July and heavy rainfall at isolated places over West Bengal & Sikkim on 15<sup>th</sup> July.

**Jharkhand:** Light to moderate rainfall at most places with heavy to very heavy rainfall at isolated places during 15<sup>th</sup> – 16<sup>th</sup> July and extremely heavy rainfall at isolated places till morning hours 15<sup>th</sup> July.

**Bihar:** Light to moderate rainfall at most places with heavy rainfall at isolated places till morning of 15<sup>th</sup> July, and heavy to very heavy rainfall at isolated places on 15<sup>th</sup> & 16<sup>th</sup> July.

**Chhattisgarh:** Light to moderate rainfall at most places with heavy to very heavy rainfall at isolated places till morning hours 15<sup>th</sup> July; heavy to extremely heavy at isolated places on 15<sup>th</sup>; heavy to very heavy rainfall at isolated places on 16<sup>th</sup> July and heavy rainfall at isolated places on 17<sup>th</sup> July.

**East Madhya Pradesh:** Light to moderate rainfall at most places with heavy rainfall at isolated places on 15<sup>th</sup> July and heavy to very heavy rainfall at isolated places during 16<sup>th</sup> -17<sup>th</sup> July.

**West Madhya Pradesh:** Light to moderate rainfall at most places with heavy to very heavy rainfall at isolated places till morning of 15<sup>th</sup> July and heavy rainfall at isolated places during 15<sup>th</sup> -18<sup>th</sup> July.

**East Rajasthan:** Light to moderate rainfall at most places with heavy to very heavy rainfall at a few places with extremely heavy rainfall (**≥ 21 cm**) at isolated places 15<sup>th</sup> July; heavy rainfall at isolated places on 16<sup>th</sup> & 17<sup>th</sup> July.

**West Rajasthan:** Light to moderate rainfall at most places with heavy to very heavy rainfall at a few places with extremely heavy rainfall (**≥ 21 cm**) at isolated places on 15<sup>th</sup> July; heavy to very heavy rainfall at isolated places on 16<sup>th</sup> and heavy rainfall at isolated places on 17<sup>th</sup> July.

**Gujarat:** Light to moderate rainfall at most places with heavy to very heavy rainfall at isolated places over Gujarat region till morning hours 15<sup>th</sup> and heavy rainfall at isolated places on 15<sup>th</sup> July. Heavy rainfall at isolated places over Saurashtra & Kutch till morning hours of 15<sup>th</sup> July.

**East Uttar Pradesh:** Light to moderate rainfall at most places with heavy to very heavy rainfall at isolated places till morning hours of 15<sup>th</sup> July and heavy rainfall at isolated places during 15<sup>th</sup> – 18<sup>th</sup> July with heavy to very heavy rainfall at isolated places on 17<sup>th</sup> July.

**West Uttar Pradesh:** Light to moderate rainfall at most places with heavy rainfall at isolated places during 16<sup>th</sup> – 18<sup>th</sup> July.

**Assam:** Light to moderate rainfall at most places with heavy to very heavy rainfall at isolated places on 15<sup>th</sup> July and heavy rainfall at isolated places on 17<sup>th</sup> July.

**Meghalaya:** Light to moderate rainfall at most places with heavy to very heavy rainfall at isolated places on 15<sup>th</sup> July and heavy rainfall at isolated places on 17<sup>th</sup> July.

### **(ii) Wind Warning:**

- ❖ Squally wind speed reaching 40-50 kmph gusting to 60 kmph is prevailing over north Bay of Bengal, along & off Odisha, West Bengal and Bangladesh coasts for next 24 hours. Squally wind speed reaching 30-40 kmph gusting to 50 kmph is likely over West Bengal, Jharkhand, and North Odisha during next 24 hours.
- ❖ Squally wind speed reaching 30-40 kmph gusting to 50 kmph is likely over northeast Rajasthan and adjoining northwest Madhya Pradesh for next 24 hours, and over south Rajasthan & neighbourhood for subsequent 24 hours.

**(iii) Sea Condition:**

**Sea condition is very likely to be rough to very rough over** north Bay of Bengal and along & off Odisha, West Bengal and Bangladesh coasts during next 24 hours.

**(iv) Fishermen Warning:**

Fishermen are advised not to venture into north Bay of Bengal, along & off Odisha, West Bengal and Bangladesh coasts for next 24 hours.

**(v) Impact Expected and Action Suggested due to heavy rainfall and squally winds**

**Impact expected:**

- ❖ Breaking of tree branches, uprooting of small trees like banana, papaya, drum sticks. Strong wind and rain may damage plantation, horticulture and standing crops.
- ❖ Partial damage to vulnerable structures due to strong winds and rain.
- ❖ Minor damage to kutcha houses/walls, huts and roads due to heavy rain.
- ❖ Loose objects may fly.
- ❖ Onshore and offshore operations may get affected.
- ❖ Small ships, trawlers and boats may be affected.
- ❖ Road and rail traffic may be affected due to heavy rain and squally winds.
- ❖ There could be localised landslides, mudslides, landslips, water logging, inundation and flooding over low lying areas.
- ❖ Occasional reduction in visibility due to heavy rainfall.
- ❖ Helicopter services may get affected.

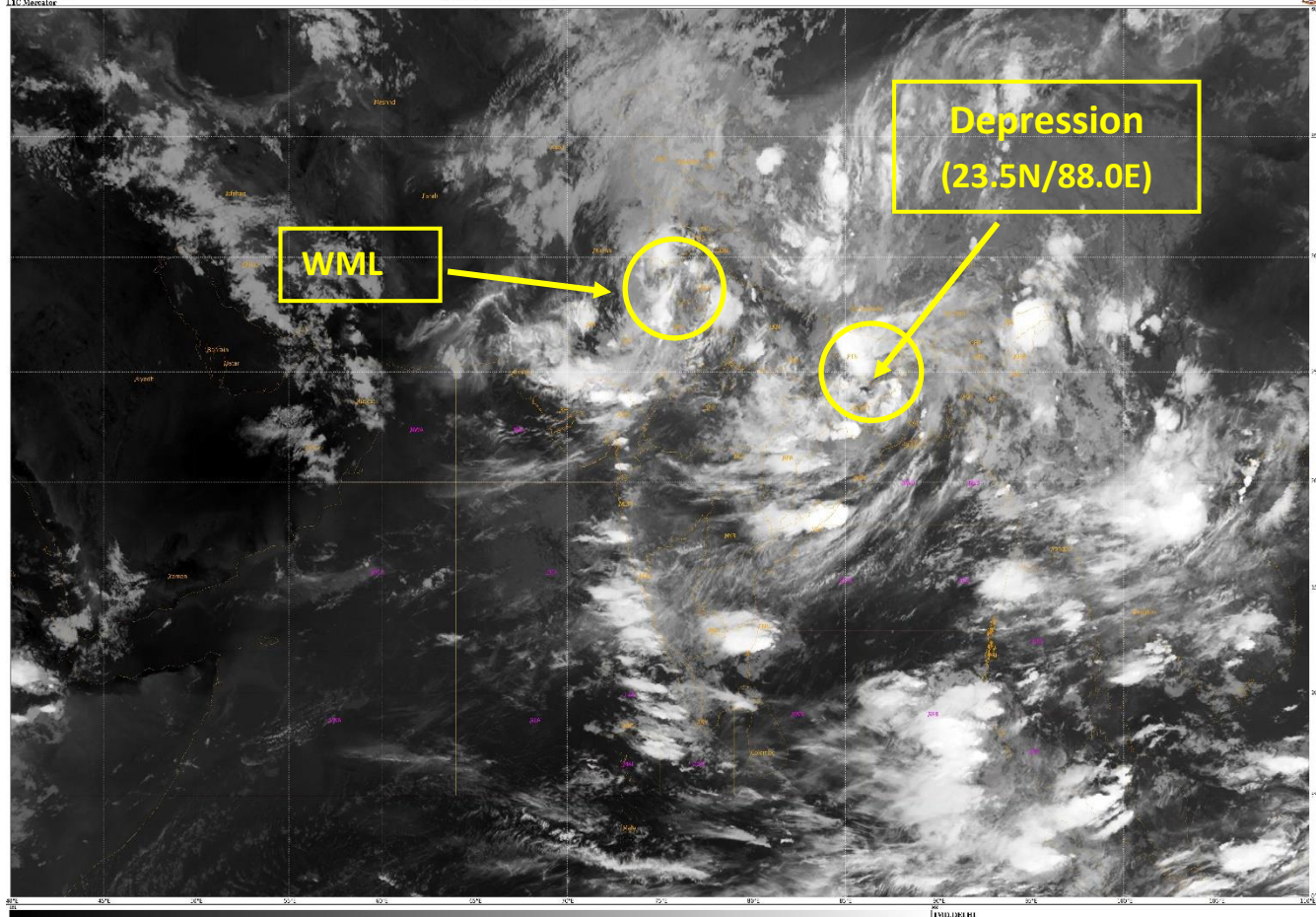
**Action suggested:**

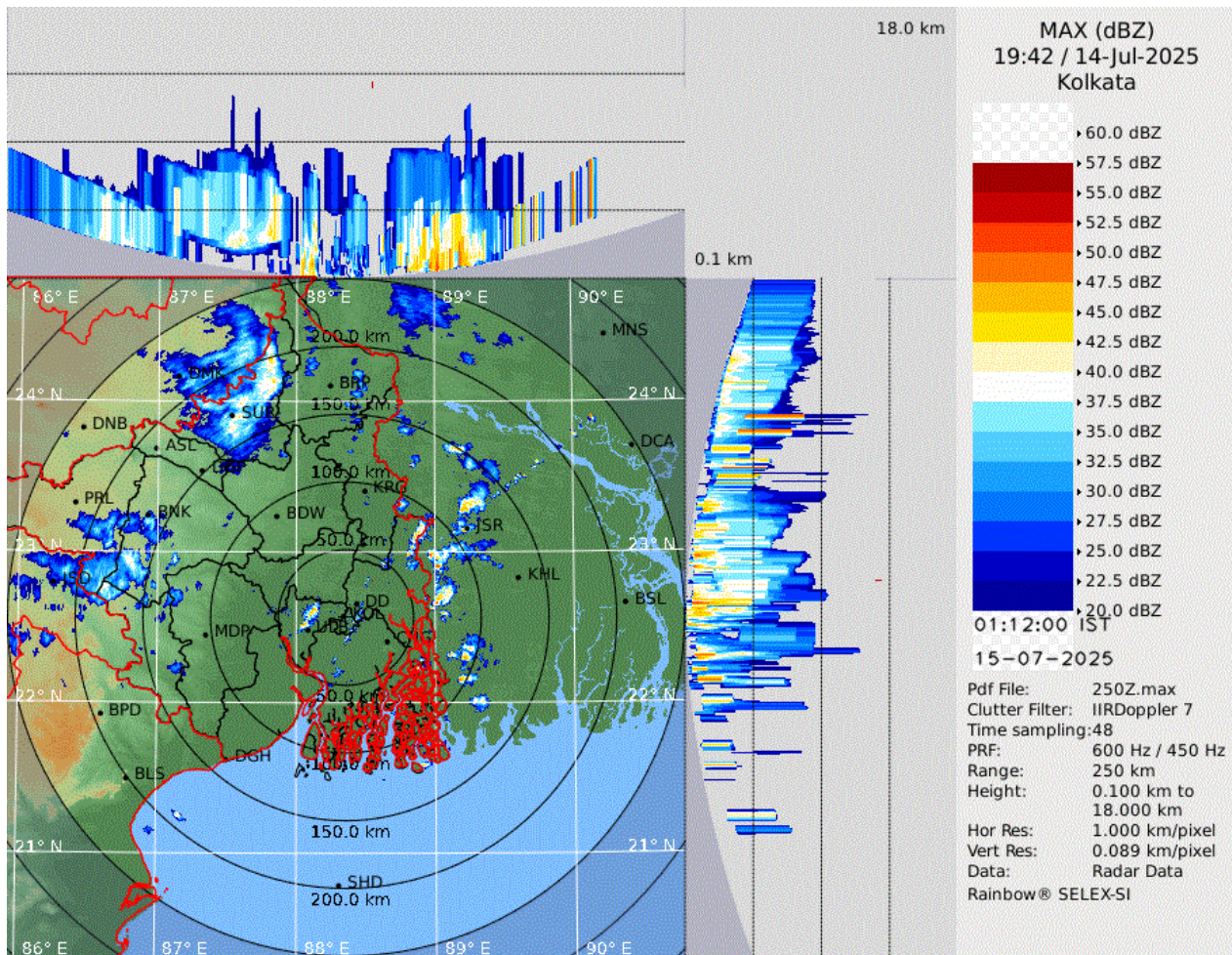
- ❖ People are advised to keep a watch on the weather for worsening conditions and be ready to move to safer places accordingly.
- ❖ Take safe shelters; do not take shelter under trees, as there could be lightning.
- ❖ In case of expected lightning, unplug electrical/ electronic appliances, immediately, get out of water bodies and keep away from all the objects that conduct electricity.
- ❖ Tourism and recreational activities to be regulated.
- ❖ Onshore and offshore activities to be judiciously regulated.
- ❖ Helicopter services to be regulated.

**Next bulletin will be issued at 0830 hours IST of today, the 15<sup>th</sup> July, 2025.**

**(Umasankar Das)**  
**Scientist D, New Delhi**

*Copy to: ACWC Kolkata/ACWC Chennai/CWC Bhubaneswar/CWC Vishakhapatnam/Meteorological Centres- Port Blair/ Itanagar/ Kohima/ Agartala/ Gangtok/ Imphal/ Aizwal/ Shillong/ Gangtok/ Regional Meteorological Centre Guwahati*

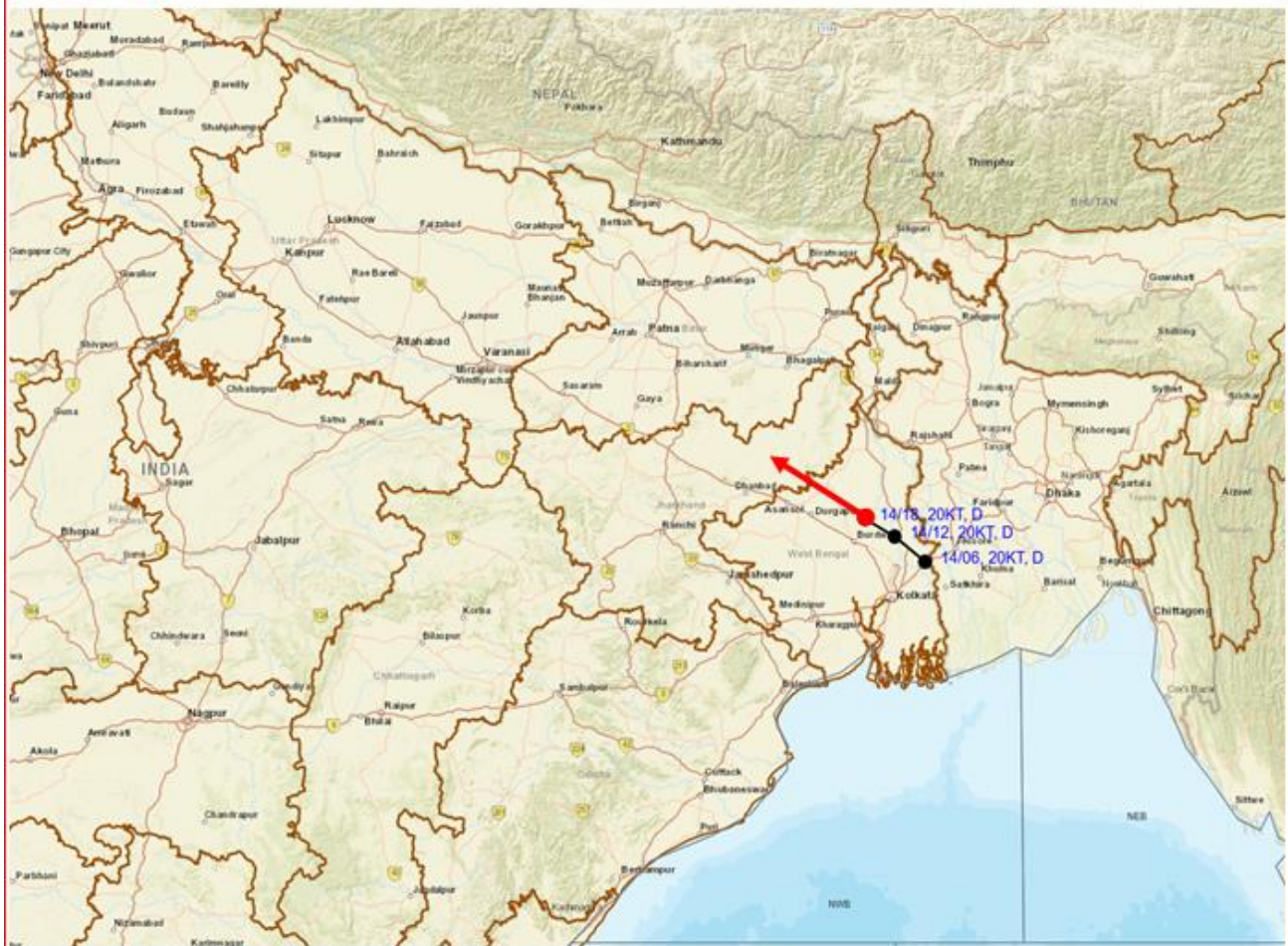




Latest Radar Image of DWR Kolkata



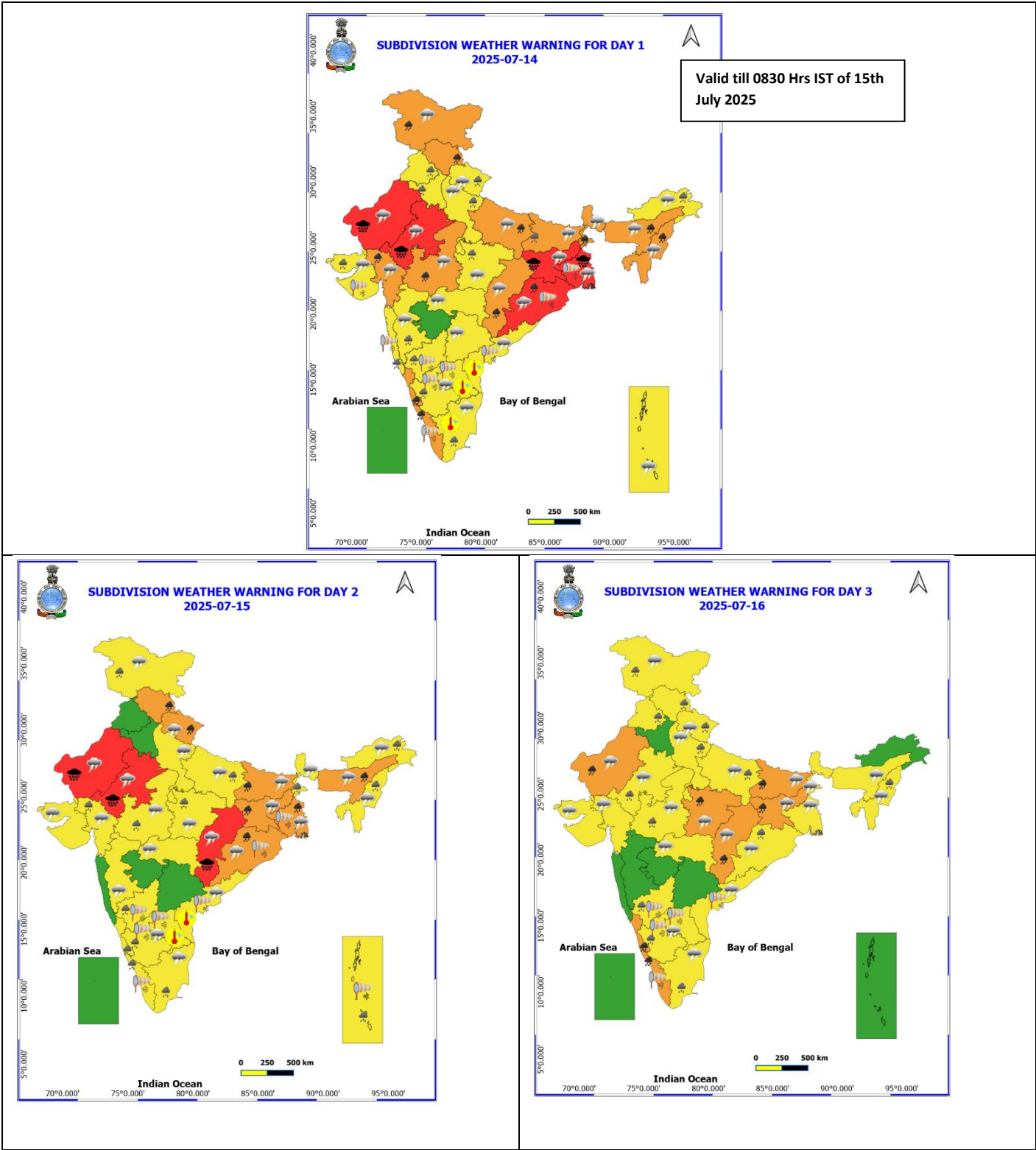
## OBSERVED AND FORECAST TRACK OF DEPRESSION OVER CENTRAL PARTS OF GANGETIC WEST BENGAL ON 1800 UTC (2330 Hrs. IST) OF 14<sup>th</sup> JULY 2025

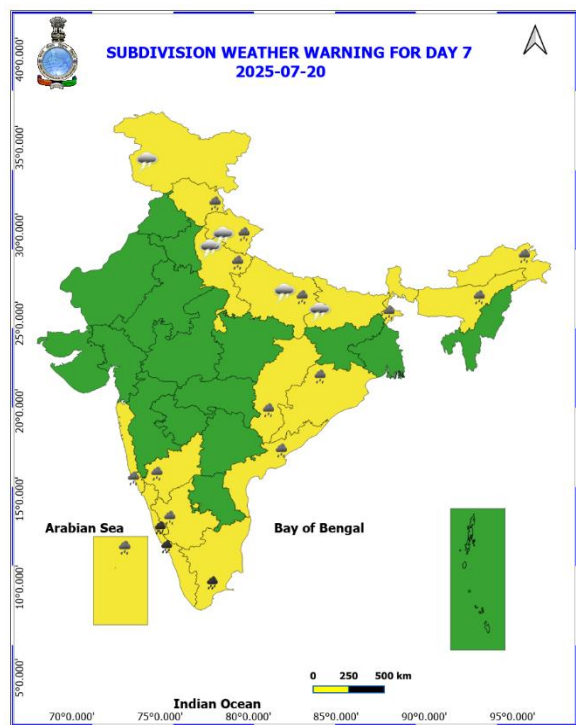
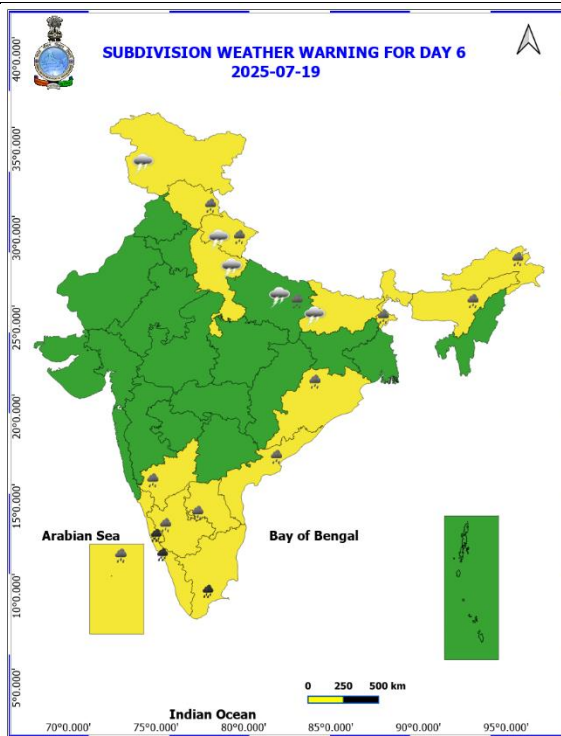
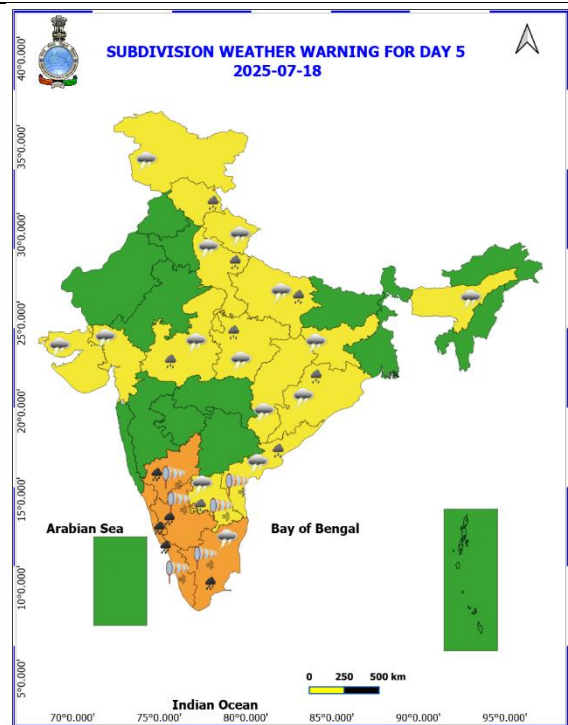
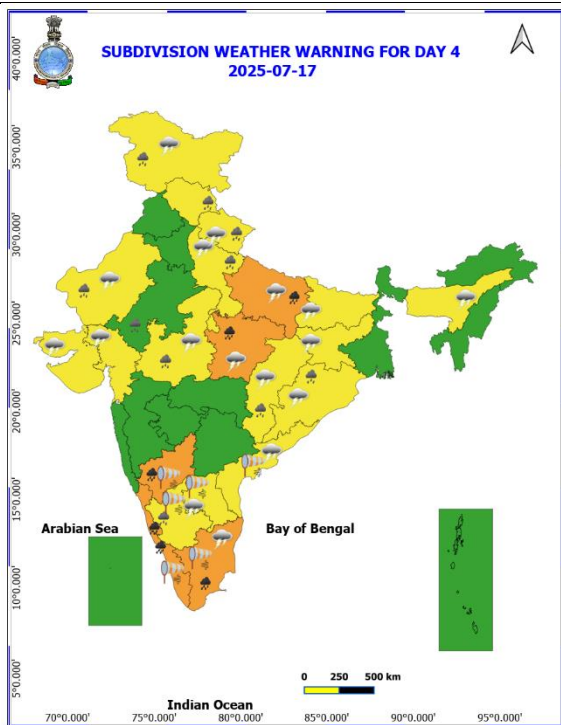


DATE/TIME	: IN UTC
IST	: UTC + 0530
KT	: NAUTICAL MILE/HOUR = 1.85 KM/HOUR
LPA	: LOW PRESSURE AREA
WML	: WELL MARKED LOW PRESSURE AREA
D	: DEPRESSION (17-27 KT)
DD	: DEEP DEPRESSION (28-33 KT)
CS	: CYCLONIC STORM (34-47 KT)
SCS	: SEVERE CYCLONIC STORM (48-63 KT)
VSCS	: VERY SEVERE CYCLONIC STORM (64-89 KT)
ESCS	: EXTREMELY SEVERE CYCLONIC STORM (90-119 KT)
SuCS	: SUPER CYCLONIC STORM (≥120 KT)

	LESS THAN 34 KT
	34-47 KT
	≥ 48 KT
	OBSERVED TRACK
	FORECAST TRACK
	CONE OF UNCERTAINTY

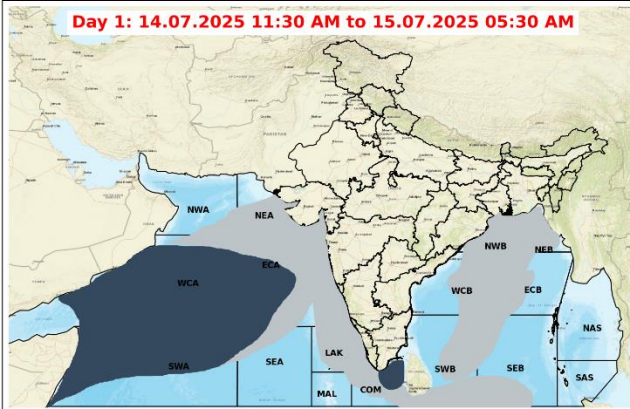
# Weather Warning Graphics



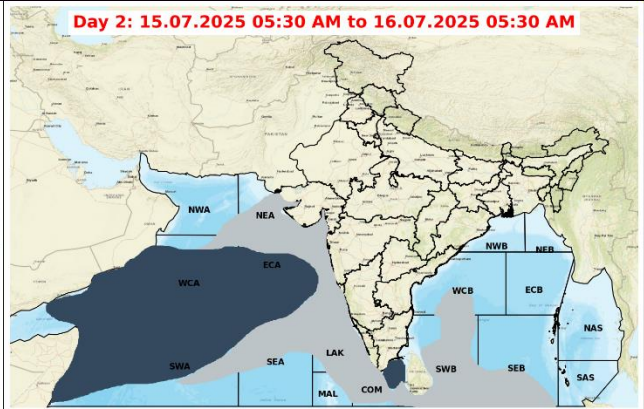


## Fishermen Warning Graphics

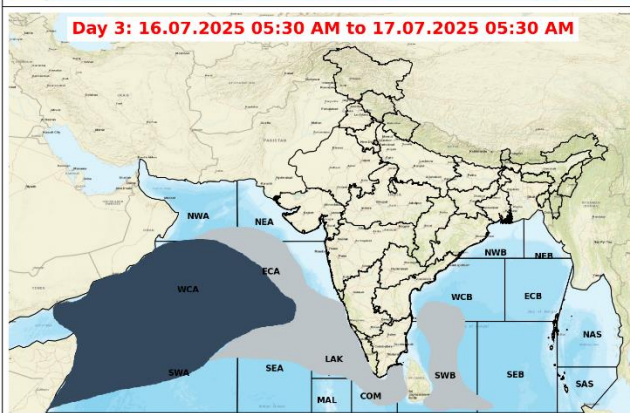
**Day 1: 14.07.2025 11:30 AM to 15.07.2025 05:30 AM**



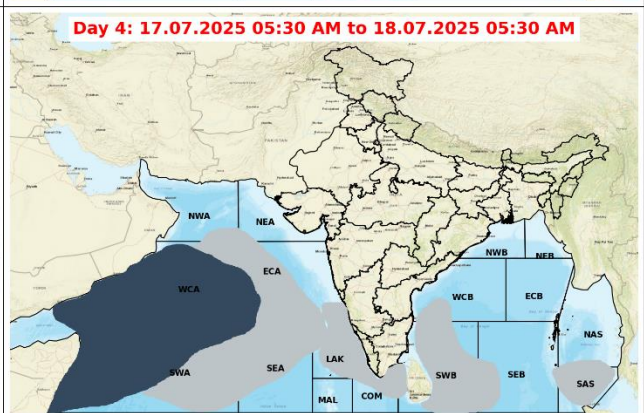
**Day 2: 15.07.2025 05:30 AM to 16.07.2025 05:30 AM**



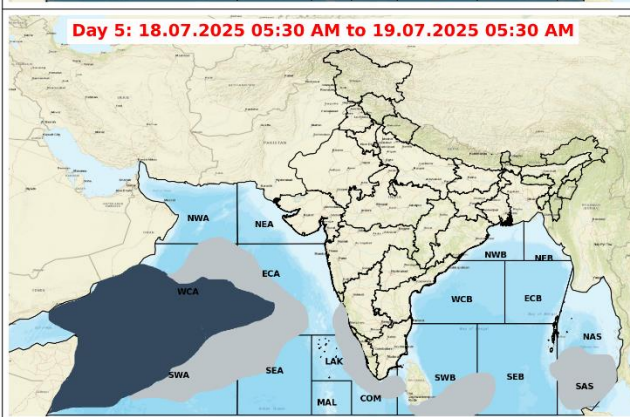
**Day 3: 16.07.2025 05:30 AM to 17.07.2025 05:30 AM**



**Day 4: 17.07.2025 05:30 AM to 18.07.2025 05:30 AM**



**Day 5: 18.07.2025 05:30 AM to 19.07.2025 05:30 AM**



### Legend

	Squally wind with speed 45-55 kmph gusting to 65 kmph		Squally wind with speed 55-65 kmph gusting to 75 kmph
	Squally Weather with wind speed 40-50 kmph gusting to 60 kmph		CS with Gale winds with speed 60-80 kmph gusting to 90 kmph
	Squally wind with speed 45-55 kmph gusting to 65 kmph		SCS with Gale wind speed 90-110 kmph gusting to 120 kmph
	Squally Weather with wind speed 45-55 kmph gusting to 65 kmph		VSCS with Gale wind speed 120-165 kmph gusting to 185 kmph
	Squally wind with speed 50-60 kmph gusting to 70 kmph		ESCS with Gale wind speed 165-220 kmph gusting to 245 kmph

Fishermen are advised not to venture into the marked areas.

## Flash Flood Guidance

### **24 hours Outlook for the Flash Flood Risk (FFR) till 1730 IST of 15-07-2025:**

**Moderate to High flash flood risk** likely over few watersheds & neighbourhoods of following Met Sub-divisions during next 24 hours.

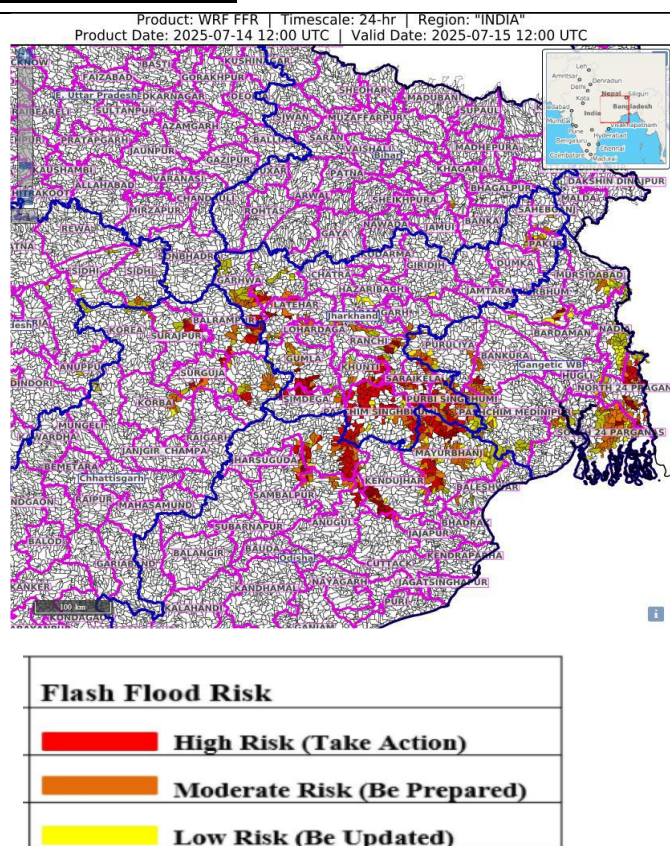
**Chhattisgarh** - Balarampur, Jashpur, Korba, Korea, Raigarh, Surajpur and Surguja districts.

**Odisha** - Deogarh, Kendujhar, Mayurbhanj, Sambalpur and Sundargarh districts.

**Gangetic West Bengal** - Bankura, Birbhum, Eastmednipur, Mursidabad, Nadia, North 24 Pragana, Pashchim Medinipur, Puruliya and South 24 Parganas districts.

**Jharkhand** - Bokaro, East Singhbhum, Garhwa, Gumla, Khunti, Latehar, Lohardaga, Palamu, Ranchi, Saraikela, Simdega and West Singhbhum districts.

Surface runoff/ Inundation may occur at some fully saturated soils & low-lying areas over Area of Concern (AoC) as shown in map due to expected rainfall occurrence in next 24 hours.



### **24 hours Outlook for the Flash Flood Risk (FFR) till 1730 IST of 15-07-2025 :**

**Moderate flash flood risk** likely over few watersheds & neighbourhoods of following Met Sub-divisions during next 24 hours.

**East Rajasthan** - Ajmer, Banswara, Baran, Bhilwara, Jaipur, Udaipur, Chittaurgarh, Jhalawar, Kota, Pratapgarh, Rajsmand, Sikar, Swaimadhopur and Tonk districts.

**West Rajasthan** - Nagaur and Pali districts.

**West Madhya Pradesh** – Sheopur, Guna, Neemach, and Mandsaur districts  
Surface runoff/ Inundation may occur at some fully saturated soils & low-lying areas over Area of Concern (AoC) as shown in map due to expected rainfall occurrence in next 24 hours.

